



# Official Town Guide



Tour Kindsville Town



Kindness Challenges



## ----- Kindsville -----

**SINGA**

Male



**SINGA** is a cheerful cub with a loud personality. He gets excited over everything and loves to be in the centre of attention. He can get a little impatient sometimes when things go too slowly. Singa loves sports and is willing to try anything!



Welcome message  
by Singa

# Singa and the kindness cubbies

## ----- Kindsville -----

**KALLE**

Female

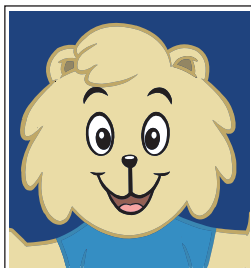


**KALLE** is a caring cub whom everyone adores because she loves helping others. She is so popular, you rarely see her alone. However Kalle can be a little passive and she just follows what the other cubs are doing.

## ----- Kindsville -----

**TOME0**

Male

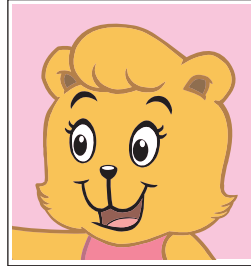


**TOME0** is a very careful cub. He is comfortable only with familiar people and does not like to try new things. He is a very good cook though. Come during the festivals of Kindsville to taste the dishes he whips up!

## ----- Kindsville -----

**SHER**

Female

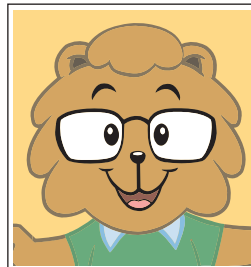


**SHER** is a big lover of daisies. She is a sweet and innocent girl, but is always overly focused on her daisies. This makes her a little 'blur' sometimes.

## ----- Kindsville -----

**TOSH**

Male



**TOSH** is smart and loves to read. Every cub goes to Tosh for advice as he is the wisest of them all. (p/s: You will usually find Tosh in the library or under a tree reading.)

# Kindsville Houses

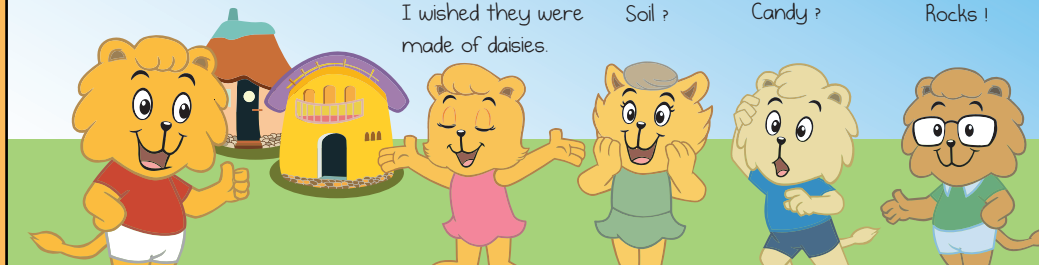
Do you know what the houses in Kindsville are made of?

I wished they were made of daisies.

Soil ?

Candy ?

Rocks !



Houses in Kindsville are called cob houses. Cob houses are made with natural materials like clay, sand and straw.



Wow ! What makes these cob houses special ?



By building houses with natural materials under our feet, we are saving our world's energy. Little energy is also wasted because we do not use machines.



You mean our houses are eco-friendly?



Yes! In fact, houses in Kindsville are sculpted by hand with love, using eco-friendly substance.



They are beautiful ! Love the smooth and curvy designs. Perhaps we can further beautify our homes with more yellow daisies!



Sounds exciting ! With everyone's effort, we can make Kindsville a more lovely town!



A cartoon illustration of a yellow bear wearing a pink dress, holding a small bouquet of yellow flowers. The bear is smiling and looking towards the viewer. The background is a solid light blue color.



Date/Day: \_\_\_\_\_

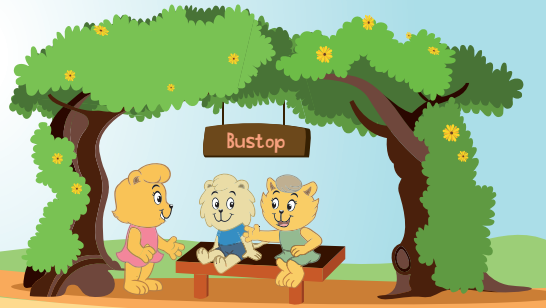
[illegible]

# Getting Around Kindsville

Find out how Singa and the kindness cubbies travel around Kindsville !

## ① Bus

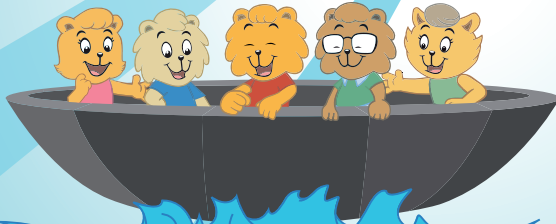
The Kindsville bus transports Singa and the kindness cubbies from town to school and around Kindsville.



## ② Spaceship

Singa and the kindness cubbies sometimes teleport between Kindsville and the human world during their adventures.

Their amazing time machine space-craft changes its shape when it travels from one world to another !







# Watch Singa and the Kindness Cubbies Animation

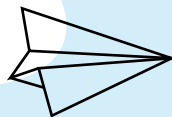


When Singa and the Kindness Cubbies hear the plight of a child, they have to time travel to the future only to discover that Singa himself was responsible for Kai Leng's tears.

Watch the animation episode on  
<http://www.youtube.com/kindnesssg>  
to find out what happen to Kai Leng that made him cry !

# Back to School Challenge

## Make new friends!



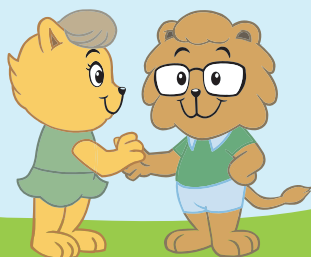
Write to a classmate and introduce yourself!  
(Cut out these cards and pass it to a friend)



A rectangular card template with a dashed border. The top has a light blue header with the word "HELLO" in large, bold, yellow 3D letters. Below the header is a yellow background. On the left, there is a small yellow flower icon. In the center, the text "I AM" is written in red, with a horizontal line underneath for a name. At the bottom, the text "Can I be your friend?" is written in orange. A large yellow flower icon is on the right side. Scissors icons are at the top right and bottom right corners.



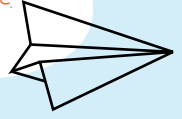
A rectangular card template with a dashed border. The top has a red header with the word "HI!" in large, bold, yellow 3D letters. Below the header is a light orange background. On the left, there is a small yellow flower icon. In the center, the text "I AM" is written in red, with a horizontal line underneath for a name. At the bottom, the text "Can I be your friend?" is written in orange. A large yellow flower icon is on the right side. Scissors icons are at the top right and bottom right corners.



# Tips to making friends

To have a friend is one of the most wonderful experiences in life.  
You can make friends by making someone's day!

Write to a classmate and do  
something to make his/her day!



## MY MESSAGE



## MY MESSAGE



### To make someone's day, you can:

Making a birthday card for a classmate

Help to bring food to a sick classmate

Play a football game with a classmate after class

Help a classmate who is poor in mathematics



# Write to Singa

How do you feel going back to school? What are some of the kind acts you can do in school to make someone's day?  
We will be happy to hear from you!

Send us your letters, drawings, pictures or questions on kindness in Singapore!



Post it by snail mail to:  
Singa and the Kindness Cubbies  
Singapore Kindness Movement  
140 Hill Street #05-01  
Old Hill Street Police Station  
Singapore 179369



